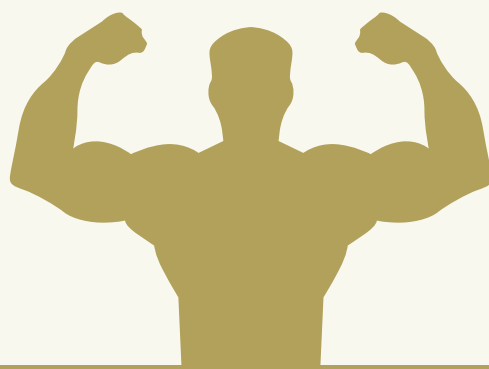


Gypotec
Gold



The Winning Board



 **Gypotec**
IBÉRICA

MULTI-FUNCTION BOARD RESISTANT TO EVERYTHING

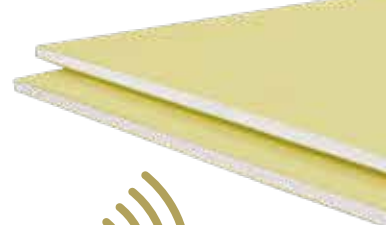
Gypotec
Gold

Laminated gypsum board reinforced with fiberglass to improve fire resistance, with greater density and resistance to impact and bending, with water repellent additives to decrease water absorption.

Suitable for all interior systems with higher capacity load characteristics, fire and humidity resistance.



High hardness



High
acoustic
performance

QUALITY AND VERSATILITY

Gold board, excellent product from the range of Gyptec solutions, combines multiple benefits of the various types of boards, **allowing to solve all the needs of a project using only one board.**

In addition to providing better performance in areas of moderate humidity and fire resistance, **Gyptec Gold** plasterboard has higher density and impact resistance suitable for areas with high affluence, such as schools, gyms, shopping centers or hotels.



Moisture
resistant



Fire
resistant

The Winning Board

COVERS ALL INDOOR NEEDS



HOSPITALS, HEALTH CENTERS AND CLINICS
OFFICES, SHOPPING CENTERS AND GYMS
SCHOOLS, RESIDENTIAL PROJECTS AND HOTELS

Dimensions

Thickness ($\pm 0,5$ mm)	12,5			15		
Width (+0/-4 mm)	1 200			1 200		
Length (+0/-5 mm)	2 000	2 500	3 000	2 000	2 500	3 000

Technical Data

Approximate weight ($\pm 5\%$ kg/m ²)	10,30	12,30
Density (kg/m ³)	824	820
Flexural strength (N) \geq Longitudinal / Transverse	725/300	870/360
Thermal conductivity W/m. $^{\circ}$ C (23 $^{\circ}$ C/ dry)	0,25	0,25

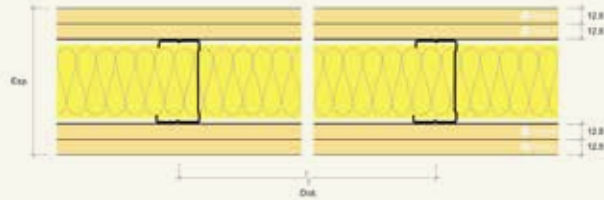




120 Gold Partition

GDIV 120/400 [2x13Gold+70+2x13Gold] MW60

Solution for partition walls, consisting of: Structure with horizontal metal profiles and vertical profiles 'C' Studs 70, spaced every 400 mm, to which two layers of Gyptec BA13Gold (GOLD) boards are fixed on both outer faces. Volcalis ALPHA mineral wool in the air space.



Thickness	120 mm
Maximum height	4,25 meters
Weight per m ²	50,58 kg/m ²

Acoustic Insulation

R_w = 51 dB

Itecons reference test
ACU 228/10

Fire Resistance

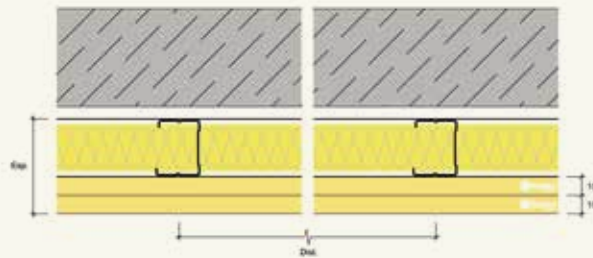
EI 120

Validation by extension
TECNALIA 107672-002

78 Gold Lining

GREV 78/400 [2x15Gold+48] MW50

Solution for interior wall lining, consisting of: Supporting structure with horizontal metal profile 'U' Studs 48 and vertical metal profile 'C' Studs 48, spaced every 400 mm, to which two layers of Gyptec BA15Gold (GOLD) boards are fixed. Volcalis ALPHA mineral wool in the air space.



Thickness	78 mm
Maximum height	2,75 meters
Weight per m ²	30,18 kg/m ²

Acoustic Insulation

Δ R_w = 21 dB

Itecons reference test
ACU 320/12

Fire Resistance

EI 60

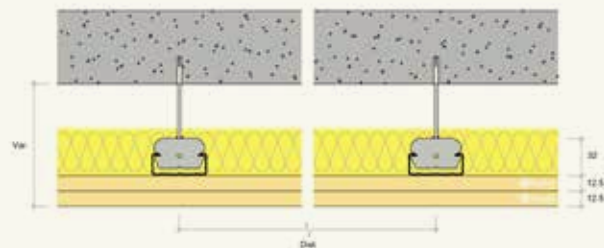
Validation by extension
TECNALIA 110298-003

* distance between reinforcements or connections

57 Gold Ceiling

GCDS 57/400 [2x13Gold+(PT45)] MW60

Solution for ceilings, consisting of: Cross structure with horizontal ceiling profile PT45, spaced every 400 mm, suspended by rod pivots to the ceiling, to which two layers of Gyptec BA13Gold (GOLD) boards are attached. Volcalis ALPHA mineral wool in the air space.



Thickness	57 mm
-----------	-------

Weight per m ²	26,14 kg/m ²
---------------------------	-------------------------

Acoustic Insulation

R_w = 71 dB
Δ R_w = 19 dB

Itecons reference test
ACL 052/14

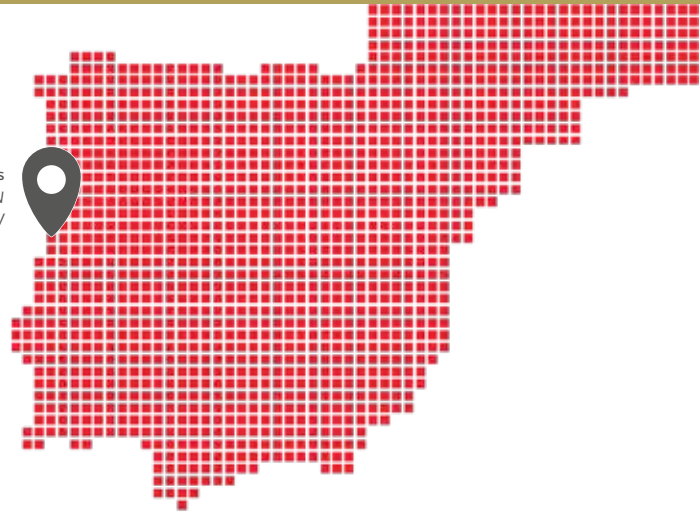
Fire Resistance

Ln, r,w = 52 (-4) dB
Δ Lw = 26 (-7) dB

Itecons reference test
ACL 054/14



Distribution
We have a complete and versatile distribution fleet that covers the entire Iberian Peninsula. Contact us.



GPS
40.11234 N
8.84635 W



Gypotec IBÉRICA - Gessos Técnicos, S.A.
Parque Ind. e Emp. da Figueira da Foz
Lote 3 - S. Pedro
3090-380 Figueira da Foz
Portugal

T (+351) 233 403 050
F (+351) 233 430 126
geral@gypotec.eu
www.gypotec.eu

