

PLACAS DE GESSO | YESO LAMINADO | DRYWALL



**Materials
and solutions
Interior
systems**



YOUR PROJECT DESERVES THE BEST





FIND OUT MORE



Member of **EUROGYPSUM** THE VOICE OF THE EUROPEAN GYPSUM INDUSTRY

The European manufacturers of gypsum products, Eurogypsum, aims to ensure the sustainable growth of the market, while contributing to the quality of construction and environmental sustainability.

The members of this European association are committed to using only 100% recyclable products and to the development of higher value-added solutions.



Gyptec Ibérica has been recognized with the AENOR N Sustainable Mark. AENOR assessed Gyptec's commitment to sustainability by analysing a set of indicators related to social, economic, and environmental aspects.



SEE MORE



SUSTAINABILITY CERTIFICATE

Ecotool created by the Sustainable Construction Portal, based on ISO 14024 - Type I environmental certifications.

STRONG STAKE IN SUSTAINABILITY

Gyptec Ibérica actively contributes towards sustainable development by seeking and using eco-efficient practices and technologies, combining its growth with environmental protection. The company seeks sustainability at all levels, whether economic, social or environmental.

YOUR PROJECT DESERVES THE BEST

Gyptec Ibérica – Gessos Técnicos, SA, a portuguese company part of the Preceram Group, has been engaged in the production of plasterboards, using sustainable methods, since 2009.

The Industrial and Business Cluster of Figueira da Foz, where Gyptec is located, is part of the most complete node of traffic distribution in the central region of Portugal, where the maritime, rail and road networks are all interconnected.

A pioneer in the production of plasterboard in Portugal, Gyptec develops solutions for construction and rehabilitation, resistant to fire, impact and humidity, with high thermal and acoustic performance.

More than plasterboard, Gyptec has the solution.



Certifications

Gyptec Ibérica is certified by AENOR, according to Standard EN ISO 9001, for the manufacture of gypsum laminated boards, composite boards with thermal and acoustic insulation and commercialization of support materials.

Gyptec also has the Environmental Management System Certificate, according to EN ISO 14001, which shows how Gyptec ensures a rational use of energy and resources, taking into account the prevention of the environment, legal compliance and socio-economic conditions.

Collect, recycle and reintegrate

It uses as raw materials: recycled paper and FGD gypsum. Gyptec also promotes selective collection of leftover boards, recycling and reintegrating them back into production.



Proven Quality

All products with the **Gyptec** brand or name guarantee quality and technical perfection in the various applications for which they are intended, being periodically subjected to rigorous tests and trials.



Partnerships

Gyptec Ibérica is proud to be partnered with several institutes for technology development at international level.



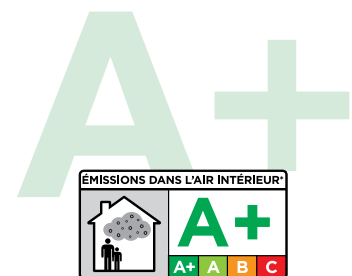
AENOR, the Spanish Association for Standardization and Certification, certifies that the laminate plasterboards manufactured by Gyptec Ibérica comply with Standard EN 520 and with RP 35.09 of Aenor (Specific Aenor regulation for Gypsum laminated plasterboards). All products meet the requirements of the applicable standards for the purposes of CE marking.



INTERIOR AIR QUALITY

Gyptec gypsum boards are a non-combustible material, resistant to fire and impacts, and free from harmful substances and ensures a healthy indoor environment.

Gyptec gypsum boards are rated A+ for indoor air quality. This qualification comes from the French regulations for emissions of volatile pollutants, with Category A+ being the best indoor air quality classification, meaning very low or no emissions of substances in indoor air, such as VOCs (volatile organic compound).



FIND OUT MORE



Efficient and Affordable

In the construction or rehabilitation of buildings, the adoption of the most appropriate solutions is a key factor for good energy efficiency. Apart from the savings in labour, the application of value-added Gyptec boards significantly reduces energy requirements for heating and cooling buildings, thus reducing the consequent energy consumption and costs.

Effective and Versatile

Helps change indoor modulation of buildings, adapting it to modern architecture. The dry construction system is a fast, clean, economical and environmentally sustainable method for modernizing buildings. Gyptec laminated plasterboards are certified and internationally recognized for their excellent quality. They are the ideal solution both for new construction and for rehabilitation.

STANDARD

Suitable for all type of interior dry construction, such as: partition and walls, wall lining, suspended ceilings, lighting and pelmet features and other decorative applications.

Board A - EN 520

Width (mm): 1200

Thickness (mm): 6 / 9,5 / 12,5 / 15 / 18

Length (mm): 2000 - 3000



HYDROPHOBIC

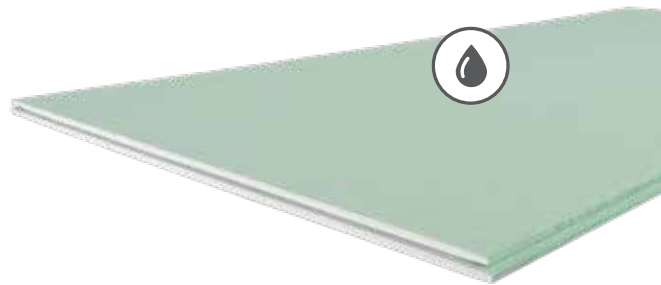
Gypsum board treated with a water-repellent agent to reduce water absorption. Suitable for damp or wet areas: such as kitchens and bathrooms. Can be covered with tiles or similar coating.

Board H - EN 520

Width (mm): 1200

Thickness (mm): 12,5 / 15

Length (mm): 2000 - 3000



ANTI-FIRE

Gypsum board with fiberglass to improve the fire reaction of the gypsum core. Suitable for areas requiring high fire resistance.

Board F - EN 520

Width (mm): 1200

Thickness (mm): 12,5 / 15

Length (mm): 2000 - 3000



HIGH HARDNESS

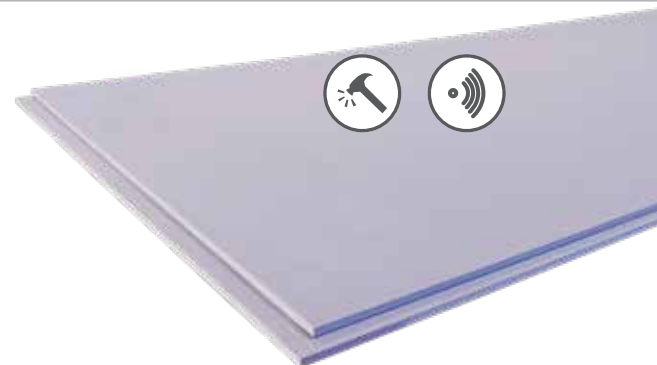
Plasterboard with higher density and impact resistance. Suitable for areas where greater impact resistance and greater acoustic comfort are required: schools, hotels, hospitals, offices, shopping centers and pavilions.

Board D - EN 520

Width (mm): 1200

Thickness (mm): 12,5 / 15

Length (mm): 2000 - 3000



GOLD

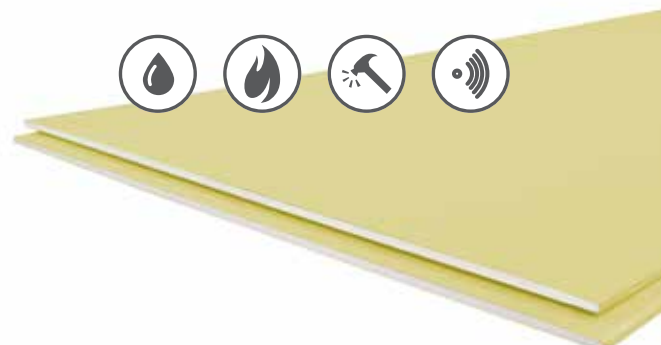
Gypsum board reinforced with fiberglass to improve fire resistance, with greater density and resistance to impact and bending, with water repellent additives to decrease water absorption. Suitable for all interior systems with higher capacity load characteristics, fire and humidity resistance.

Board D, F, H1, I, R - EN 520

Width (mm): 1200

Thickness (mm): 12,5 / 15

Length (mm): 2000 - 3000



Boards

GYPTEC A1

Non-combustible board for maximum fire protection. Gypsum board composed of two paper liners, reinforced with fiberglass, with a high-quality gypsum core and A1 fire reaction classification. Designed for critical areas requiring maximum fire safety.

Board A - EN 520 (A1)
Width (mm): 1200
Thickness (mm): 12,5 / 15
Length (mm): 2000 / 3000



Protect

Board coated with a special fiberglass fabric instead of traditional paper, which gives it excellent resistance to moisture and A1 fire reaction rating.

Width (mm): 1200
Thickness (mm): 12,5
Length (mm): 2000 / 2400



EPS

Board consisting of a type A plasterboard (Standard) or a type H plasterboard (Hydrophobic) and an insulating layer in Expanded Polystyrene (EPS). An affordable solution for thermal insulation of walls.

Width (mm): 1200
Thickness (mm): 29,5 / 32,5 / 39,5 / 42,5 / 49,5 / 52,5 / 62,5 / 69,5 / 72,5 / 89,5 / 92,5 / 109,5 / 112,5
Length (mm): 2500 / 2600



GYPCORK

Board composed of a type A plasterboard (Standard) or a type H plasterboard (Hydrophobic) and an insulating layer in Expanded Cork Agglomerate (ICB). With 100% natural cork from Amorim Cork Insulation, it promotes sustainable construction with high thermal and acoustic performance. Ideal for sustainable rehabilitation.

Width (mm): 1200
Thickness (mm): 32,5 / 52,5 / 72,5
Length (mm): 2000 / 2500



GYPCORK Protect

Composite board consisting of a Protect gypsum board and expanded cork agglomerate insulation (ICB), developed to meet more demanding technical requirements, such as applications in façades or for interior use in humid areas.

Width (mm): 1200
Thickness (mm): 52,5 / 72,5
Length (mm): 2000



PROFILES AND ACCESSORIES

We offer a wide range of profiles and metal accessories for dry construction.



GR2, GR4, GS24 AND GH1 JOINT FILLER AND GA ADHESIVE GLUE

GR2, GR4, GS24 and GH1 are suitable for the treatment of joints in between laminated plasterboards, bonding bands and finishing coats. Adhesive GA powder is suitable for bonding together laminated plasterboards, joint filling, and small imperfections. Gyptec joint fillers and adhesive glues are suitable for all kind of dried work indoors, such as: partition and walls, wall lining, ceilings, crown moulding lighting and other decorative elements.



VOLCALIS MINERAL WOOL

Volcalis mineral wool is an ecological product based on sand and binder of biological origin, made in Portugal, available in rolls and slabs, with high thermal and acoustic performance, fire resistant, easy to apply and to handle.

This product of growing demand in the construction sector comes to increase the wide range of solutions offered by the Preceram Group companies and, more directly, to complement the gypsum board systems of Gyptec Ibérica.

Comfort now it's easier.

Available in four ranges:



thermal insulation



acoustic insulation



non-combustible



indoor air quality

EASY

λ40

Volcalis EASY, mineral wool roll with or without coating. Light and easy to apply, with good thermal and acoustic performance.

COMFORT

λ37

Volcalis COMFORT is suitable for multiple applications, ideal for increasing the thermal and acoustic comfort of buildings.

ALPHA

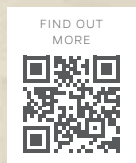
λ35

Volcalis ALPHA, mineral wool with improved performance. Non-combustible, of very low thermal conductivity, and excellent acoustic performance.

ALPHA PLUS

λ32

Volcalis ALPHA PLUS, mineral wool with high thermal resistance. With excellent thermal and acoustic properties.



Partition and Wall

According to the envisaged final thickness and desired insulation characteristics the most suitable type of system to be employed can be chosen: simple with higher fire resistance, with or without insulation.

In areas of greater demand, more complex systems are used, with reinforced structure and double or triple boards.



SIMPLE PARTITION

Designation DIVISÓRIA 120 BA13A
Reference GDIV-0113A-BA13

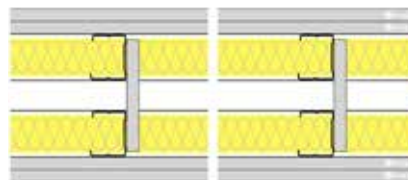


Thickness: 120 mm **Acoustic isol.:** $R_w = 51$ dB
Maximum height: 3,85 m **Resis. to fire:** EI 60

Structure with horizontal 'U' Channel 70 and vertical 'C' Stud 70 metal profiles, spaced every 600 mm apart, to which 2 layers of Gyptec BA13A (STANDARD) boards are fixed on both sides. Volcalis ALPHA Mineral Wool in the air space.

DOUBLE PARTITION 48

Designation DIVISÓRIA DUPLA 176 BA13A
Reference GDIV-0126A-BA13

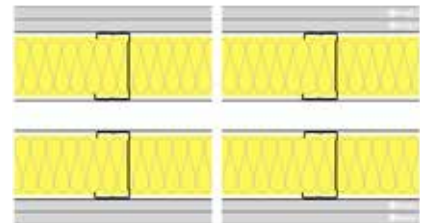


Thickness: 176 mm **Acoustic isol.:** $R_w = 59$ dB
Maximum height: 5,00 m **Resis. to fire:** EI 60

Two independent structures with horizontal 'U' Channel 48 and vertical 'C' Stud 48 metal profiles, spaced every 600 mm apart, on which two layers of Gyptec BA13A (STANDARD) boards are fixed on both outer sides. Connection between structures. Volcalis ALPHA Mineral Wool in the air space.

DOUBLE PARTITION 70

Designation DIVISÓRIA DUPLA 220 BA13A
Reference GDIV-0125A-BA13

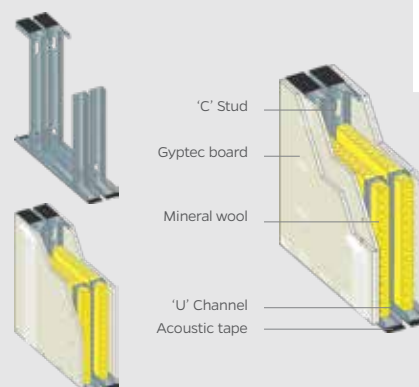


Thickness: 220 mm **Acoustic isol.:** $R_w = 67$ dB
Maximum height: 3,20 m **Resis. to fire:** EI 60

Two independent structures with horizontal 'U' Channel 70 and vertical 'C' Stud 70 metal profiles, spaced every 600 mm apart, to which 2 layers of Gyptec BA13A (STANDARD) boards are fixed on both outer faces. Volcalis Mineral Wool ALPHA in the air space.

Application

Cover the 'U' Channel with acoustic tape and secure them to the floor and ceiling. Make sure they are aligned. Do likewise with the side 'C' Studs. Fit the intermediate 'C' Studs with the recommended spacing (400 or 600 mm). Attach the boards on one side of the wall with PM screws and apply the insulation. Screw the boards on the opposite side. If it is a dual board solution, secure with staggered joints.



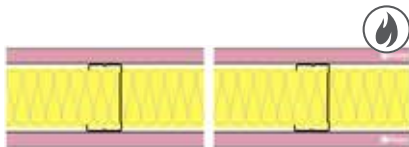
See more partition and wall solutions in **SOLUTION MANAGER**

Quick execution
Allows any type of finishing
Increases thermal and acoustic comfort



ANTI-FIRE PARTITION

Designation DIVISÓRIA 100 BA15F
Reference GDIV-1108F-BA15

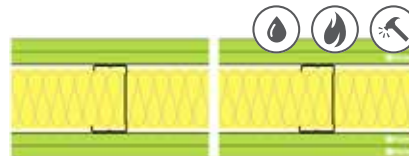


Thickness: 100 mm **Acoustic isol.:** $R_w = 45$ dB
Maximum height: 3,20 m **Resis. to fire:** EI 60

Structure with horizontal 'U' Channel 70 and vertical 'C' Stud 70 metal profiles, spaced every 600 mm apart, to which 1 layer of Gyptec BA15F (ANTI-FIRE) boards are fixed on both sides. Volcalis ALPHA Mineral Wool in the air space.

PROTECT PARTITION

Designation DIVISÓRIA 120 BA13Protect
Reference GDIV-0134Protect-BA13



Thickness: 120 mm **Acoustic isol.:** $R_w = 51$ dB
Maximum height: 3,85 m **Resis. to fire:** EI 180

Structure with horizontal 'U' Channel 70 and vertical 'C' Stud 70 metal profiles, spaced every 600 mm apart, to which 2 layers of Gyptec BA13 PROTECT boards are fixed on both sides. Volcalis ALPHA Mineral Wool in the air space.

BIM Building Information Modelling

BIM Library

Download here the Gyptec objects



Did you know that you can improve the energy efficiency of a building?

Gyptec plasterboards allow you to rehabilitate and upgrade any building, contributing to the reduction of energy consumption, and improving comfort levels. Gyptec dry construction systems are fire and impact resistant, and have excellent thermal and acoustic insulation capabilities.

Did you know that you can paste tiles and hang objects on Gyptec boards?

Gyptec plasterboards may receive various types of finishing such as paint, wallpaper and tiles. In wet areas, we recommend the use of Water-Resistant Boards. To attach objects up to 15 kg to the Gyptec boards, simply use a suitable bushing for that purpose. Heavier objects, such as a closet, can be directly attached onto the metal profiles that are easily detectable with a magnet.



Wall Lining

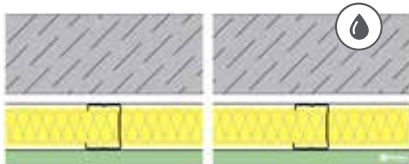
One of the most practical and efficient ways to recover existing buildings, or as a root solution for new projects. Which system to recommend depends on the conditions of the wall and on the intended insulation.

The boards can be applied with a metal support structure



HYDROPHOBIC WALL LINING

Designation REVESTIMENTO 63 BA15H
Reference GREV-1101H-BA15



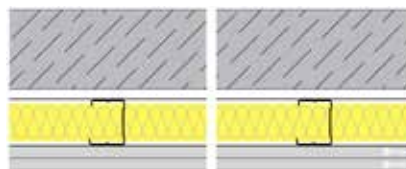
Thickness: 63 mm **Acoustic isol.:** $R_w = 18$ dB
Maximum height*: 2,10 m

Self-supporting structure with horizontal 'U' Channel 48 and vertical 'C' Stud 48 metal profiles, spaced every 600 mm apart, to which 1 layer of Gyptec BA15H (HYDROPHOBIC) boards are fixed. Volcalis ALPHA Mineral Wool in the air space.

* distance between reinforcements or connections

SIMPLE WALL LINING

Designation REVESTIMENTO 73 BA13A
Reference GREV-0102A-BA13



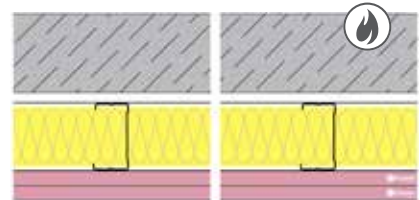
Thickness: 73 mm **Acoustic isol.:** $R_w = 20$ dB
Maximum height*: 2,50 m **Resis. to fire:** EI 30

Self-supporting structure with horizontal 'U' Channel 48 and vertical 'C' Stud 48 metal profiles, spaced every 600 mm apart, to which 2 layers of Gyptec BA13A (STANDARD) boards are fixed. Volcalis ALPHA mineral wool in air space.

* distance between reinforcements or connections

ANTI-FIRE WALL LINING

Designation REVESTIMENTO 100 BA15F
Reference GREV-1102F-BA15



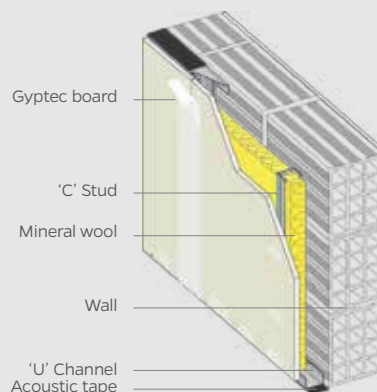
Thickness: 100 mm **Acoustic isol.:** $R_w = 21$ dB
Maximum height*: 3,20 m **Resis. to fire:** EI 60

Self-supporting structure with horizontal 'U' Channel 70 and vertical 'C' Stud 70 metal profiles, spaced every 600 mm apart, to which 2 layers of Gyptec BA15F (ANTI-FIRE) boards are fixed. Volcalis ALPHA mineral wool in air space.

* distance between reinforcements or connections

Application with self-supporting structure

An auxiliary structure fixed to the wall or self-supporting can be used - as in the example on the right. Follow the application instructions for partition walls on page 8.



See more wall lining solutions in **SOLUTION MANAGER**

Easy installation of pipes and ducts

Enhanced mechanical support

Better fastening on degraded walls

Or fixed directly to the wall with Omega profiles or GA GLUE



GA GLUE

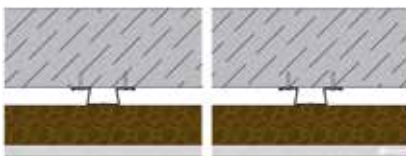
Supplied in bags of 20 kg. Usage time approximately 1h50. Depending on the support conditions, the glue consumption varies between 2,5 and 5 kg/m².



See all Gyptec solutions and systems at **SOLUTION MANAGER**

GYPCORK WALL LINING

Designation REVESTIMENTO 83 ICB 13-40
Reference GREV-0403A-BA13

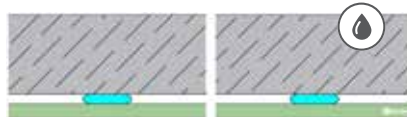


Thickness: 83 mm **Acoustic isol.:** $R_w = 9$ dB
Resis. to fire: N/A

OMEGA 33 metal profiles fixed directly to the wall, spaced every 600 mm apart, to which 1 layer of composite Gyptec ICB 13-40 (GYPCORK) boards are fixed.

HYDROPHOBIC WALL LINING

Designation REVESTIMENTO 25 BA15H
Reference GREV-1001H-BA15



Thickness: 25 mm **Acoustic isol.:** N/A
Resis. to fire: N/A

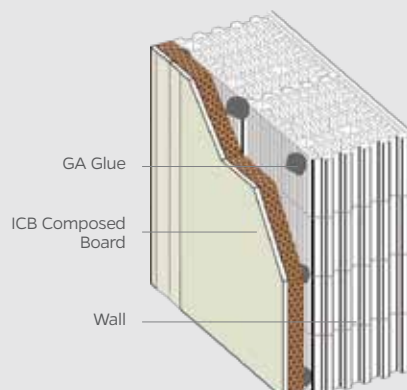
A layer of Gyptec BA15H (HYDROPHOBIC) boards glued directly to the wall face with GA GLUE dots.

Dry construction system

The dry construction system is a fast, clean, economical and environmentally sustainable method for modernizing buildings. The use of laminated plasterboard can create a healthy atmosphere by changing the indoor modulation of buildings, adapting them to modern architecture, while providing greater thermal and acoustic comfort.

Direct application

Apply the glue dots, on the board or directly on the wall, 40 cm apart, reinforcing the perimeter of each board. Fix the board 1 cm away from the floor using shims to ensure that it does not come into contact with moisture. Press the boards to ensure a good adhesion to the support, checking that the surface is flat and straightened with a ruler. Remove shims after drying.



- Increases interior comfort**
- Contributes to energy savings**
- Provides a perfect finish with no cracks or moisture**
- Versatile in its application**
- Ideal for uneven surfaces**

Ceiling

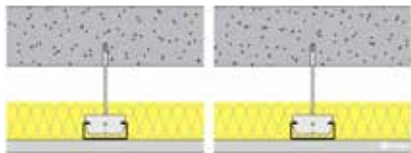
They are easy to apply, simplify the execution of electrical installations and air conditioning, and have greater aesthetic value.

According to the project and the desired insulation, we can use: simple suspended boards, with the insulation glued to the ceiling or with interposed insulation.



SIMPLE CEILING

Designation TETO 38 BA13A
Reference GCDS-0101A-BA13



ACOUSTIC ISOLATION

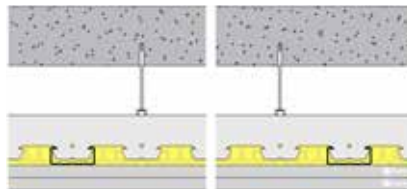
Aerial sounds:
Rw = 64 dB
 Δ Rw = 12 dB

Percussion sounds:
Ln, r,w = 61 dB
 Δ Lw = 17 dB

Structure with F530 horizontal metal profiles separated every 500 mm, suspended by vertical elements fixed to the ceiling, to which 1 layer of BA13A (STANDARD) boards are fixed. Volcalis ALPHA mineral wool in air space.

DOUBLE CEILING

Designation TETO 75 BA13A
Reference GCDS-0104A-BA13



ACOUSTIC ISOLATION

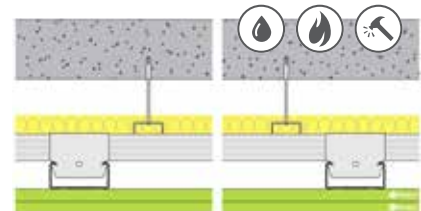
Aerial sounds:
Rw = 66 dB
 Δ Rw = 14 dB

Percussion sounds:
Ln, r,w = 57 dB
 Δ Lw = 21 dB

Structure with F530 horizontal metal profiles and Suspension Rule, spaced every 500 mm, suspended by vertical elements fixed to the ceiling, to which 2 layers of Gyptec BA13A (STANDARD) boards are fixed. Volcalis ALPHA mineral wool in air space.

PROTECT DOUBLE CEILING

Designation TETO 92 BA13Protect
Reference GCDS-0105Protect-BA13



ACOUSTIC ISOLATION

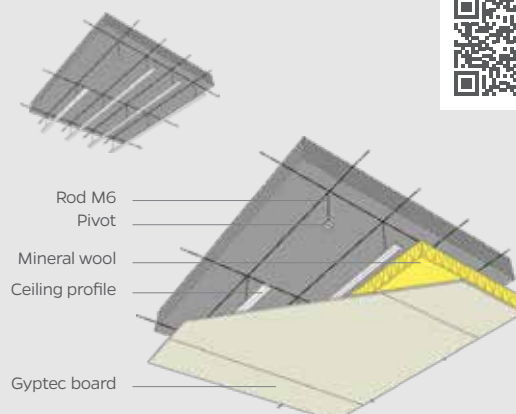
Aerial sounds:
Rw = 71 dB
 Δ Rw = 21 dB

Percussion sounds:
Ln, r,w = 54 dB
 Δ Lw = 24 dB
Resis. to fire: EI 60

Structure with F560 primary horizontal metal profiles 750 mm apart, and F560 secondary horizontal metal profiles 500 mm apart, suspended by vertical elements fixed to the ceiling, to which 2 layers of Gyptec BA13 PROTECT boards are fixed. Volcalis ALPHA mineral wool in air space.

Application

Mark the final position on the side walls with a finishing profile (angle support or fin). Attach and level the profile to the ceiling using, for example, threaded rod pivots. There are other ways for attaching the boards, depending on the support. Apply the boards with staggered joints.



View more ceiling solutions in **SOLUTION MANAGER**

Fast application with clean and dry work
Increases thermal and acoustic insulation
Fire resistant
Smooth surface without visible joints



Acoustic and fire tests

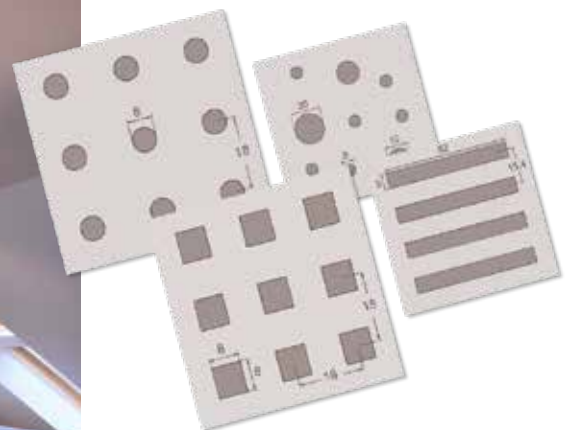
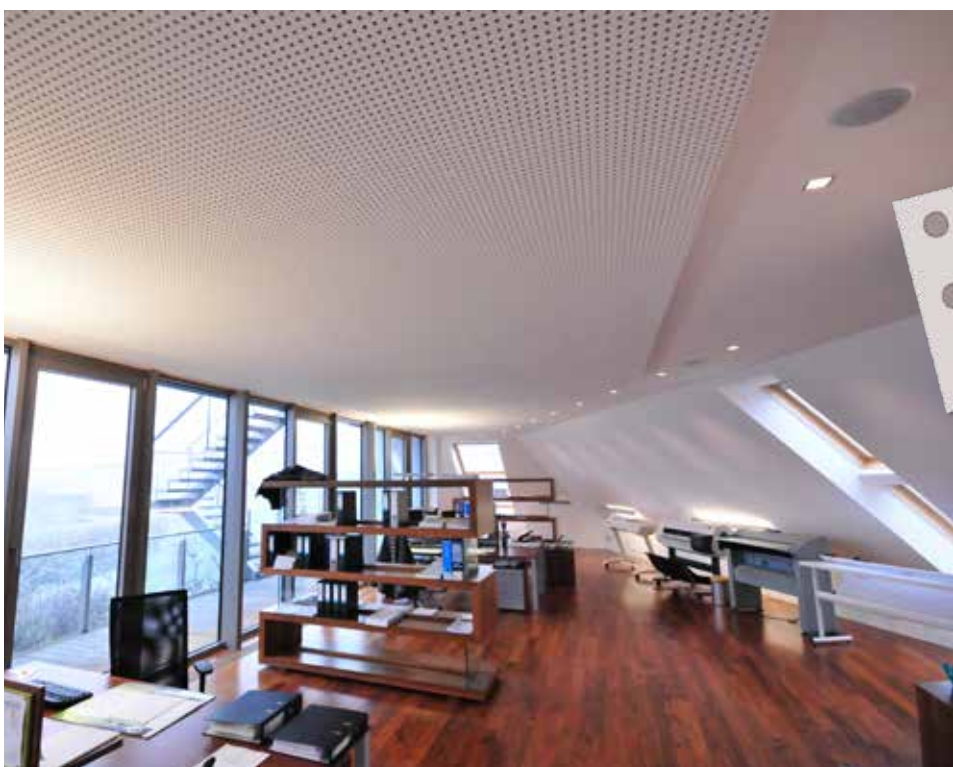
The acoustic performance and fire resistance of Gyptec solutions are regularly tested by certified laboratories.

PERFORATED BOARD GYPTEC VOGL

Acoustic design ceilings

Comprising a perforated plasterboard and a black acoustic veil on the back side, which absorbs high frequencies and prevents the fall of dust, perforated Gyptec Vogl boards are supplied ready to use.

- High sound absorption
- Simple and quick edge-to-edge assembly
- Straight edge panels facilitate the alignment
- No need for bands



Get to know the **GYPTEC VOGL CEILINGS**
12 different combinations of perforation and drawing

Reference Works

CUF, SINTRA
José de Mello Saúde Private Hospital



THE EDITORY RIVERSIDE SANTA
APOLÓNIA HOTEL, LISBOA



Health / Education

12 de Outubro Hospital - Can Misses Hospital - Vila Franca de Xira Hospital - Luz Hospital - Amarante Hospital - Torrejón Hospital - Braga Hospital - INL Braga



Hotel / Housing

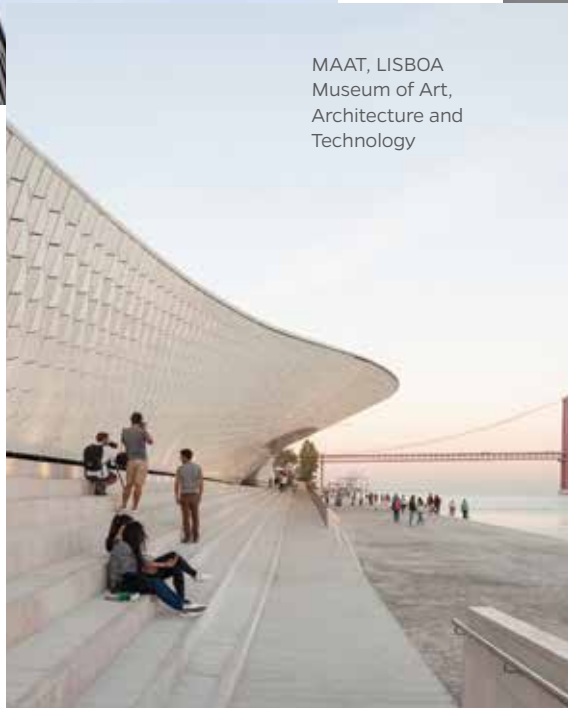
Geriatric Hotel - NH Collection Porto Batalha - Skyna Hotel Lisboa - Hotel EXE Cascais - Pousada Serra da Estrela - Hotel Hilton Bom Sucesso - My Story Hotel Ouro Epic Sana Algarve Hotel - Uma Casa Portuguesa - Meliá Braga Hotel & Spa - Evolution Lisboa Hotel - Club Med Magna Marbella

BOLUETA TOWERS
Tallest Passivhaus
Building in the World

HERDADE DO FREIXO WINERY, REDONDO
"Building of the Year 2018"



MAAT, LISBOA
Museum of Art,
Architecture and
Technology



BATALHA CINEMA
CENTER, PORTO



LISBOA JUDICIAL POLICE

Business / Services

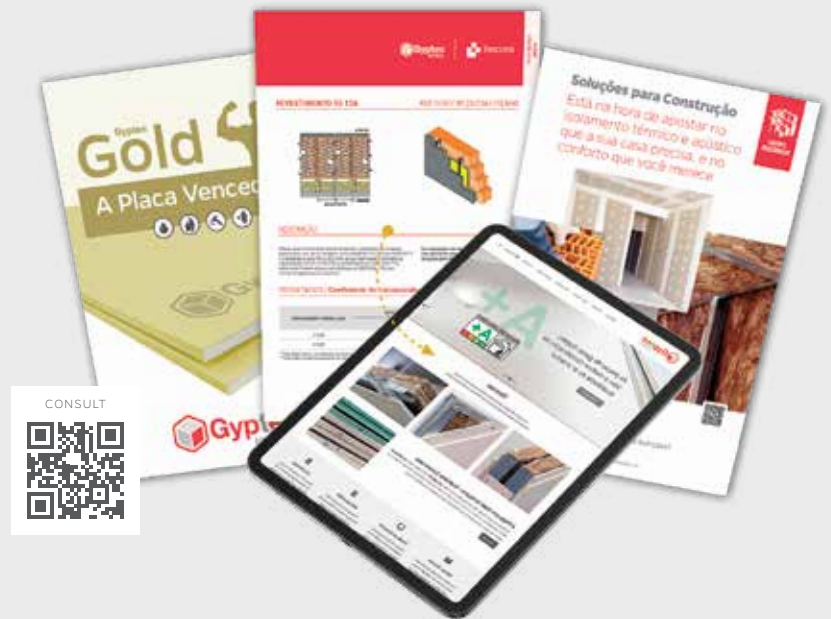
IMAX Colombo - Village Underground Nadir Afonso Foundation - Bom Sucesso Marketplace - I&D Amorim Coatings - Évora Plaza - Mormon Temple - Lisboa Judiciary Police Toledo Congress Palace - Marinada Plaza - Primavera Building BSS

More than a website, an actual working tool

Gyptec Ibérica offers a wide range of information online about its products such as product data sheets, dimensions, thermal and acoustic behaviour, certifications, testing and forms of application.

You can also consult the Gyptec catalogues, price lists and distributors by areas.

www.gyptec.eu



GYPTEC SOLUTION MANAGER

Technical information, details and budgeting

Online tool that brings together hundreds of tested and characterized systems for walls, wall lining, ceilings and partitions.

Get instant access to the most suitable solutions for each project and all its technical documentation.

Now with
BIM Building
Information
Modelling
methodology



Distributors

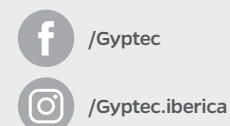
Get to know the distributor in your area nearest you.



Preceram Group

For more information about the Group or to discuss any project, please contact our team of experts.

Soluções
para Construção



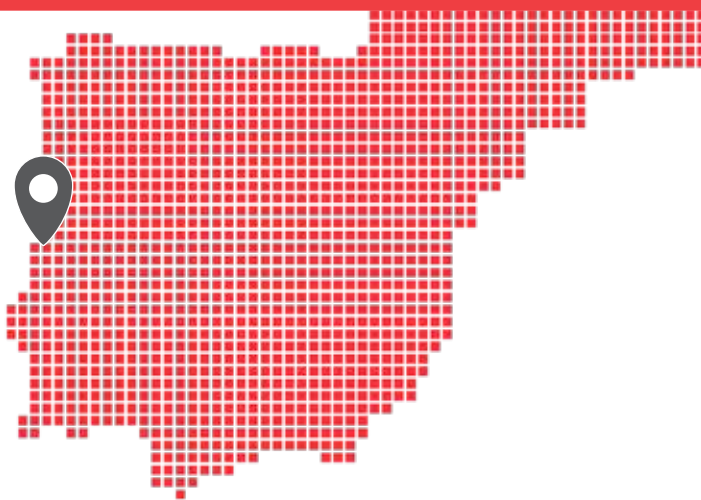


Distribution

We have a complete and versatile distribution fleet that covers the entire Iberian Peninsula. Contact us.



GPS
40.11234 N
8.84635 W



Gypotec IBÉRICA - Gessos Técnicos, S.A.
Parque Ind. e Emp. da Figueira da Foz
Lote 3 - S. Pedro
3090-380 Figueira da Foz
Portugal

T (+351) 233 403 050
F (+351) 233 430 126
geral@gypotec.eu
www.gypotec.eu

