

Protect

PLASTERBOARD
WITH **HIGH MOISTURE**
AND **FIRE RESISTANCE**



Gyptec
IBÉRICA



Protect

MAXIMUM PROTECTION

Gyptec Protect is coated with a distinctive fibreglass mat instead of traditional paper, which provides excellent resistance to moisture and an A1 classification to fire.

The **Gyptec Protect** plasterboard ensures maximum protection for sensitive areas with specific requirements and for which the use of traditional gypsum board is not advisable, namely areas that require high resistance to fire and humidity, as well as those areas with occasional exposure to water.

Characteristics	Protect
Thickness ($\pm 0,5$ mm)	12,5
Length (+ 0/-5 mm)	2400
Width (+ 0/-4 mm)	1200
Approximate weight ($\pm 5\%$ kg/m ²)	11
Volumetric density (kg/m ³)	880
Flexural strength (N) \geq Longitudinal/Transverse	725/300
Reaction to Fire	Non-combustible Euroclass A1



High resistance to moisture

The best protection for humid and wet areas. Avoids the growth and the spreading of mould.



Non-combustible

Euroclass A1 Reaction to Fire.



High thermal and acoustic performance

For greater energy saving and protection against noise.



High resistance

Durable and robust. Significantly more resistant than traditional plasterboard.



Lighter

With higher performance in works.



Sustainable solution

Can be recycled. Reduction of waste and installation costs.



Ready to be decorated

Surface ready to receive different types of finishes, such as paint and tiles.



Easy to work with

Easier to cut and faster to install than traditional cement boards.



Protect

WHERE IS IT APPLIED?



Interior

Kitchens, locker rooms, showers, pools, spa, toilets and areas with high demand for resistance to moisture and fire.

External

Balconies, porches, overhangs, very damp areas and those with occasional exposure to water.



SYSTEM APPLICATION

- 1** Apply profiles and accessories suitable for high humidity systems, that is, with galvanized thickness (corrosion protection) Z275;
- 2** Consider the maximum heights, clearances and modulations recommended in the Gyptec Technical Manual. Consult the Technical Manual of Plasterboard Systems;
- 3** The fixing of Protect board to the metallic structure is carried out with screws appropriate to the type of system and to humid environments;



- 4** Regardless of the final decorative finish applied to the systems, the treatment of Protect joints is carried out with a fiberglass band and filling of the joint with dough suitable for humid places.
- 5** There are different types of finishing that can be applied in a Protect System such as: Tiles, Surface Coating Q4 type and Painting.

In any case, and especially in areas exposed to high humidity, it is recommended to reinforce the tightness of the encounters with elements with reinforcement bands or through an elastic seal the entire perimeter, including the base, with a water resistant product.

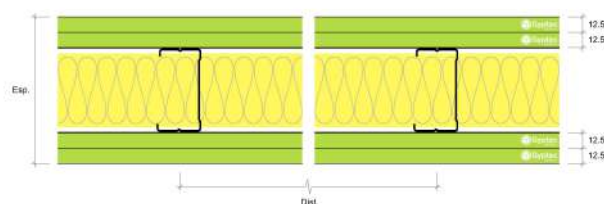
Any of these Final Finishes must be suitable for the system.

Partition 120 Protect

GDIV 120/600 [2xProtect+70+2xProtect] MW60

Solution for partition walls, consisting of: Structure with horizontal metal profiles and 'C' Studs 70, spaced every 600 mm, to which two layers of Gyptec PROTECT boards are fixed on both outer faces. Volcalis ALPHA mineral wool in the air space.

Thickness	120 mm
Maximum height	3,85 meters
Weight per m ²	55,70 kg/m ²



Acoustic isolation

Fire resistance

Rw = 51 dB

Reference test, performed at Itecons
ACL 013/19

EI 180

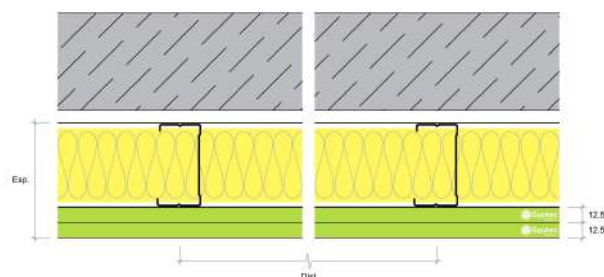
Reference test
TECNALIA 074713-001

Wall lining 95 Protect

GREV 95/600 [2xProtect+70] MW60

Solution for interior wall lining, consisting of: Supporting structure with horizontal metallic 'U' Studs 70 and 'C' Studs 70, spaced every 600 mm, to which two layers of Gyptec PROTECT boards are fixed. Volcalis ALPHA mineral wool in the air space.

Thickness	95 mm
Maximum height*	3,20 meters
Weight per m ²	29,50 kg/m ²



Acoustic isolation

Fire resistance

Rw = 41 dB

Reference test, performed at Itecons
ACL 002/19

EI 60

Reference test
TECNALIA 074714-001

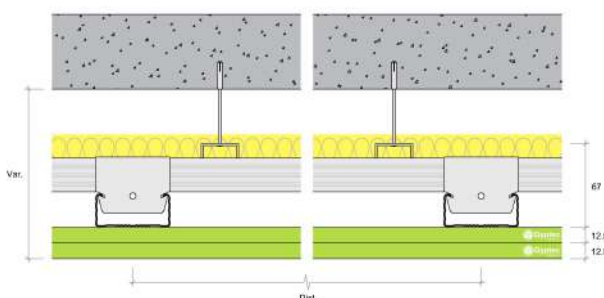
* distance between reinforcements or connections

Ceiling 92 Protect

GCDS 92/750/500 [2xProtect+2xPT60] MW60

Solution for ceilings, consisting of: Cross structure with horizontal Ceiling profile PT60, primary and secondary, spaced each 750 mm and 500 mm respectively, suspended by rod pivots to the ceiling, to which two layers of Gyptec PROTECT boards are attached. Volcalis ALPHA mineral wool in the air space.

Thickness	92 mm
Weight per m ²	30,00 kg/m ²



Acoustic isolation

Fire resistance

ΔRw = 21 dB

ΔLw = 24 dB

Reference test, performed at Itecons
ACL 005/19 e ACL 006/19

EI 60

Reference test
TECNALIA 077278-001



DOC 04.02-002 REV03
startup.design.pt

Protect

PLASTERBOARD
WATER-RESISTANT,
NON-COMBUSTIBLE
AND **HIGH RESISTANCE**



Gyptec Ibérica - Gessos Técnicos, S.A.
Parque Ind. e Emp. da Figueira da Foz
Lote 3 - S. Pedro
3090-380 Figueira da Foz
Portugal

T (+351) 233 403 050
F (+351) 233 430 126
geral@gyptec.eu
www.gyptec.eu

