

# MANUAL FOR THE STORAGE AND HANDLING OF MATERIALS

[www.gyptec.eu](http://www.gyptec.eu)



**Gyptec IBÉRICA - Gessos Técnicos, S.A.**  
Parque Ind. e Emp.da F. da Foz  
Lote 3 - S. Pedro  
3090-380 Figueira da Foz  
Portugal

T (+351) 233 403 050  
F (+351) 233 430 126  
[geral@gyptec.eu](mailto:geral@gyptec.eu)  
[www.gyptec.eu](http://www.gyptec.eu)



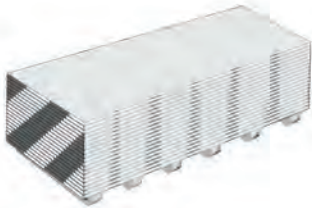
This document is intended to provide information on some storage and handling rules for the materials supplied by Gyptec Ibérica. Compliance with these rules helps the work to flow with no abnormalities and with the final quality that the customer wants.

# Gypsum Boards

## Storage

Plaster boards should be stored in a dry, clean place on a horizontal, flat pavement. They must be kept wrapped in plastic, and on the shims with a distance never greater than 60 cm, so that the weight distribution of the pallet is evenly divided.

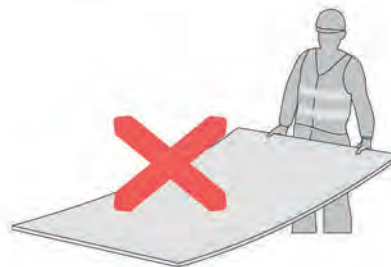
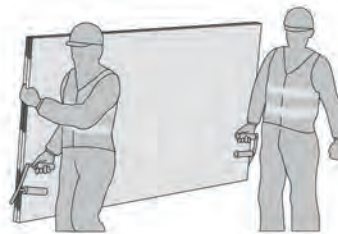
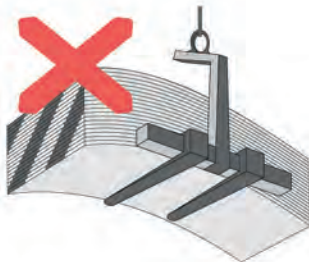
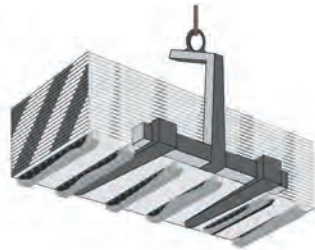
If the storage place meets all packaging requirements, it is possible to be stacked up to 8 pallets of Gyptec plasterboards; otherwise, it is advisable to stack only up to 4 pallets. When stacked, each pallet has to be separated with shims to avoid damaging the remaining boards.



## Handling

The handling of pallets, either during loading or unloading work on site, should be done with the help of unloading cranes or forklifts.

When it is impossible to use mechanical means, unloading should be performed manually by two persons. In this situation, one should carry the boards vertically, and with the use of the appropriate fittings.



# Other Profiles

Because they are manufactured from galvanized steel, with a surface treatment, the boards may remain in contact with an outside environment for some time.

However, interaction with the rain and moisture may generate some spots which do not hurt the quality of the material.

## Fillers, Screws and Tapes

These materials shall follow the same storage conditions as for the Gyptec plasterboards.

They should be stored in a clean and dry place.